

## General remarks



Carl Zeiss Jena Flektogon 35mm f/2,8 is a very nice lens using 49mm filters. It measures between 5 cm and 6.7 cm, depending on the focus. In spite of metal and proper glass it's not heavy and it does really feel good in the hand. Nicely balanced. The zebra effect is wonderful. Such an eyecatcher; very Zeiss indeed.

It is a M42 lens. So you have to get an adaptor ring before you can use it on your DSLR. The lens is fully manual; but you can get some very clever adaptor rings that make your camera go "beeeeep" when you hit focus. That is very nice – and a great help since the viewer does get very dark when you close the aperture.

The end of the lens doesn't move, when you work the focusing. That's good, because then you don't have to redo the settings when using a polarizing filter.

It's a prime lens.

Working the focusing you get almost a full circle. I think the turn is about 330 degrees from near to infinity. That's a lot and if you use the lens as you walk around, you really have to move that focusing a lot. From 16 cm to 50 cm takes about 280 degrees. Meaning it's very easy to find a precise spot for the focus in that range. The rest of the turn gives you from 50 cm to infinity. No problem there; remember that 35 mm does give you a large DOF, so focus is also easy on the long distance. The focusing is in metal but easy to work and the grip is good due to the different cuts in the black and silver blocks.

Aperture goes from 1:2.8 to 1:22. The aperturing is nicely done and easy to operate. The shifts are in clear clicks. The lens has five blades.

There is also a 35mm f:2.4 – oh that's even better, I have read, than my f:2.8. But the price is also double.

### Teknik

I found the lens described at: [http://www.praktica-users.com/lens/mlenses/czjflek2.8\\_35.html](http://www.praktica-users.com/lens/mlenses/czjflek2.8_35.html):

Construction - 6 elements, 5 groups

Angular field - 62°

Minimum focusing distance - 0.18m

Diaphragm action - Pre-set/Fully automatic

Minimum aperture - f/22

Filter size - 49mm screw-in type

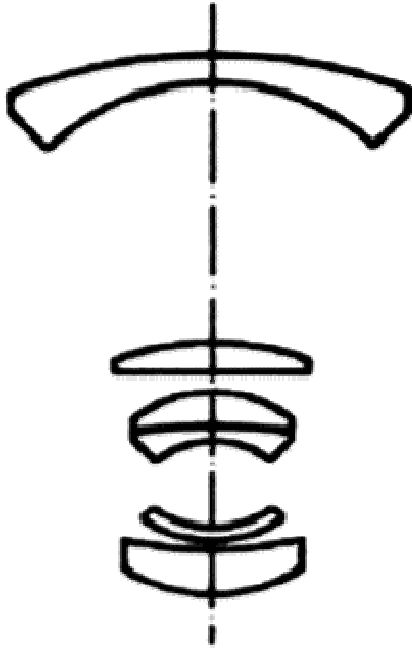
Push-on diameter - 51mm

Weight - 200g

Barrel length - 58mm

Description - First produced in bright aluminium finish as a pre-set, then the automatic version appeared as a bright fluting version with normal coating, then replaced by the 2.4/35 model. It has automatic diaphragm compensation to maintain constant light transmission throughout its focussing range.

The glass:



The f:2.4 version is said to be even more sharp – and to hold the sharpness better fully opened. Furthermore it seems like the f:2.4 version is multicoated.

#### Pris

The lens is old; but great building quality and (I guess) good treatment of the lens has given me a lens in very good sharpe. Only negative point is that me lens is a little stiff in focusing.

Furhtermore I couldn't work the "manuel-auto" buttom. The aperturewasn't, in fact, working when I got the lens (shame on you eBay-seller...). I glued the little tap – and I remember to leave the lens to really dry before using it: Didn't want any fumes to get into the camera and spoiling the inside there.

On the outside my lens is perfect. The glas is clean and the Aperture blades are both dry and clean.

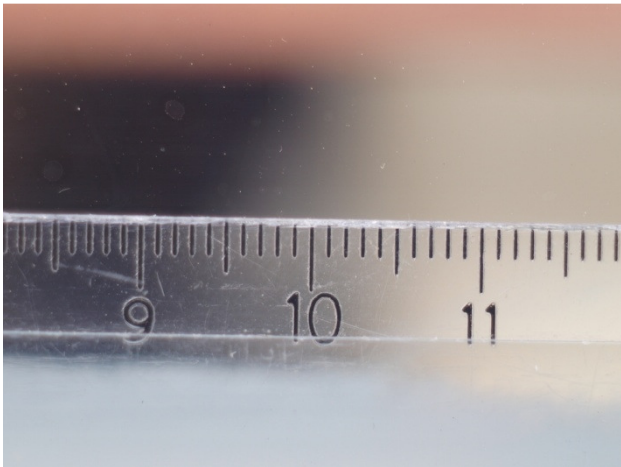
I found my lens on eBay – and it did cost £50. The price has dropped a little since. Considering the capabilities of the lens that's a bargain. But considering that my lens wasn't in perfect order, it was a little too expensive.

#### Pictures

All pictures are taken using Olympus E-520 handheld.

Let's start ut with some pictures very close to the lens:

The ruler at nearest focus (16cm):  
Resized



100% crop



The flower using f/4.  
Resized:



100% crop:



F/11:





F/8:



F/5,6:



All nice pictures showing that the lens is highly useable. Highly.

No curved lines here:



100% crop



## Conclusion

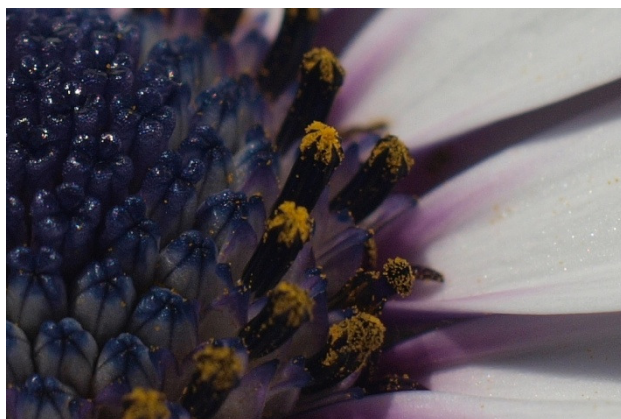
I do gladly admit that I find great pleasure in using old lenses. They offer something quite special and even though modern lenses often are better; I do enjoy the manual work and the feeling provided from the old ones. I think that color rendering and bokeh often are better using old lenses than modern ones. And... the name "Carl Zeiss" does still carry some weight with me.

I am, however, a little disappointed that the lens has given some CA in situations where it shouldn't have had to. And I do think that a lens hood is very necessary. I haven't got an original one; but I use an old one from the Olympus 100mm f/2,8 – works very very good.

At close as the lens allow:



100% crop:



The lens does meet my expectations about sharpness and colors. Colors are really nice – maybe a bit on the warm side, but still very nice. The sharpness is "spot on" – it's great in fact and the bokeh does fold itself nicely behind the object in focus.

The mark is (out of 5):

**Mark out of 5: 3,5**

It didn't make "4" because the coating is missing, I think. And it had to be more than "3" because for the wonderful sharpness and its capabilities on the short runway. I had considered if the price of the lens should be an further plus for the lens, but I decided to let it be: My lens came with some faults and that will make it even.