

Introduction



Revue weitwinkel 35mm f2.8 is an old and very pretty lens. The filterdiameter is 52mm and it will stick out 65mm from your camera, including the adaptor. With the lens hood it will priced 78mm.

The build quality is high. We have metal and glas – the hood is plastic and somehow very thin plastic. That seems flimsy and very cheap.

But the lens has a fine balance combined with a pleasant weight. The lens rests finely in the hand.

The focus ring is very light moving and has a nice feel of quality. The full turn from close limit (36cm) to infinity is about 270 degrees. The first 180 degrees take focus from 36cm to 1 meter. That means it is very easy to focus on the short track – and not difficult on the long track either. The 90 degrees left for the distance between 1 meter and infinity is just fine.

The focus ring is coated with diamond cut rubber – providing excellent grip. The front element does not turn when focusing; which is nice when using a pol-filtres.

The speed is good: f/2.8. Minimum is f/22. The lens has a shifter between manual and automatic aperture.

The aperture ring is not wide but has fine, good groves providing fine grip.

The aperture has six blades.

The lens hood is, as mentioned, in thin plast. I am surprised that it has survived normal use of the lens; but is has.

It is a M42 lens. That means you need an adaptor ring before you can mount the lens on your DSRL. It is possible to get adaptor rings with focus assistance. That will make your camera give you the normal “focus



alarm”, when focus is obtained. That is a great help, if you haven’t got superman skills in the art of focus. And it is a very useful help since your cameras viewfinder darkens when you step down the aperture.

Data

I have not really found much about the lens. But it seems to have been sold by a company called Quelle. Quelle rebranded many different Japanese brands like Yashica, Pentax, Minolta, Mamiya and more. The lenses were sold with the name REVUE.

Most REVUE lenses are made at factories owned by Osawa (Mamiya is one of them). When Quelle sold REVUE the name changed to Revuenon.

This lens is a 35mm f/2.8

Price

The lens has quite a number of years behind it. But my sample is 100% fine with a little marks of wear. The blades are clean and dry and the elements the same.

Ebay prices (buy-now) normally go from £\$40 to \$80. But once you are looking in the auctions you will find that a price around the \$40 mark seems to work for both buyer and seller.

That is a cheap lens.

Images

All images are taken using Olympus E-520.

I used of shoe flash and f/5.6, ISO 100 for the image of the Christmas tree.

In My Opinion (IMO): Very nice colors, okay sharpness and a pleasant bokeh.



The HDR from a small park next to my home has taken five pictures with 1 EV-step between each. Aperture is f/4 and ISO 100 was used.

IMO: same comments as to the Christmas tree, but a little more sharpness would be desirable.



From the same park. 1/160 sec. f/4 and ISO 100.

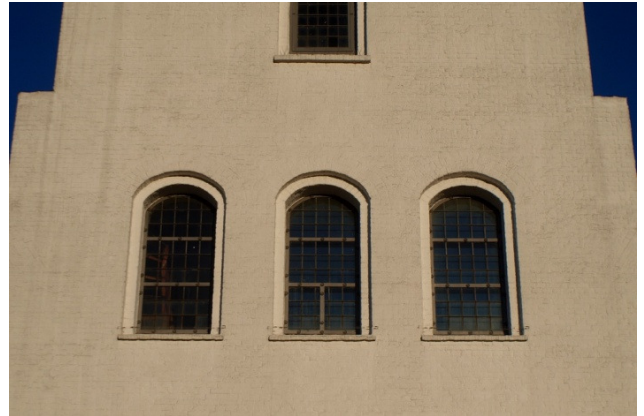
IMO: Here I find a better sharpness; but I also find that the colors are very nice.



The four images of church give the lens something to work with. Here we have strong light, many lines, texture and the deep blue sky. Aperture is f/5.6 and ISO 100.

IMO: Nice colors, fine handling of the fine details and textures, smooth bokeh and a fine sharpness.





I really like the result here. The clean colors and the wonderful handling of the light is impressive, I think.

Right: The church wall illustrates that the lens does produce a little distortion. The lines are rounded a little; but not really much.



Sharpness

Sharpness is always an issue when speaking of lenses. I like my lenses to be very sharp. Even if I don't want razor sharp images everytime. But I can easily and with no risk of artifacts add a little blur to an image, if I want to. I can also add sharpness of course; but here I soon face the risk of pixilation and other artifacts. So: Give me sharp lenses, please.

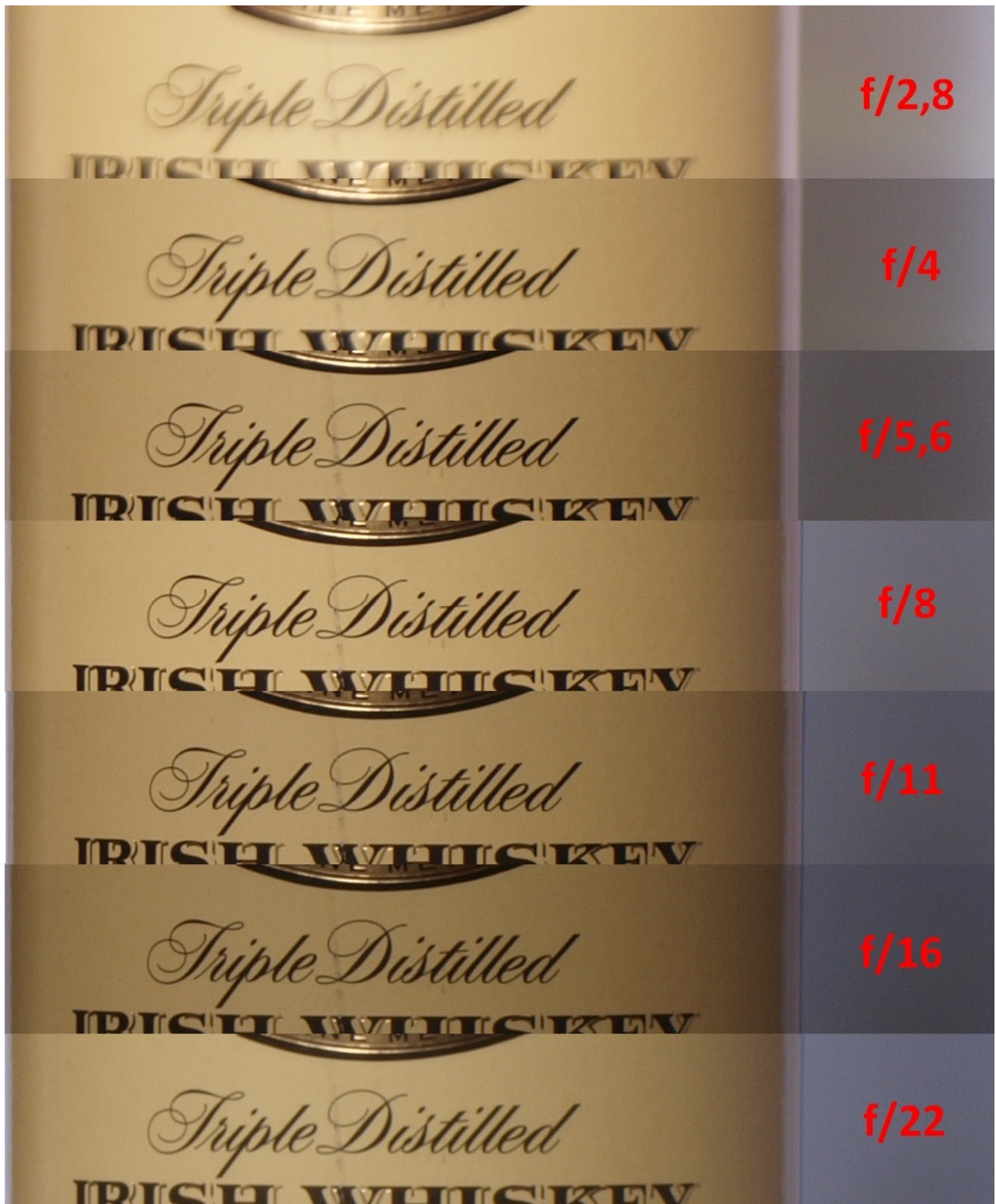
I have produced a small test using the setup as seen to the right. A bottle of Irish Coffee Whiskey, a piece of paper and a lamp. The distance is a little more than 1 meter.

The red square illustrates the size of a 1000 x 175 pixel crop.

I have taken one picture using each aperture step at the aperture ring.

On the next page you will find the result:





The test illustrates clearly what I have been seeing in my images: The sharpness of the lens doesn't kick in before f/5.6. A little disappointing since one of the forces of this lens should be the fast f/2.8 aperture for using in poor lighting conditions. Well, it is not surprising that the sharpness is best around f/8 – many lenses have that characteristic; but it would have been nice to have a better sharpness at e.g. f/4.

But look here at f/8 and lots of light.

“I love you” he says – and the lens does too, I think.

IMO: nice sharpness, very good colors, excellent handling of the details – in all: a very good image.



Conclusion

I have a thing for old lenses. That's how it is. I simply like them. But I also want them to perform properly. Revue 35mm f/2.8 is a pleasant lens to operate and use. But everytime you use an aperture larger than f/4 you will get a little disappointed. I do.

Using f/8 and having lots of lights is best best conditions for the lens – and at the best conditions it also deliver very fine results.

I like the lens. But on my scale from 1 to 5 (5 being the best) it does not get a very high mark:

Mark (out of 5): 2